

RS 5-19 GEN-3

CONSTRUCTION TELEHANDLERS

GEHL®



KEY FEATURES

- ✓ Four-wheel Drive/Four-wheel Steer
- ✓ Compact size - Less than 6' wide and under 6' 5" tall
- ✓ Able to lift and place most palletized loads
- ✓ 10,000 lb. empty vehicle weight

KEY SPECIFICATIONS

- ✓ 5,500 lbs. (2495 kg) maximum lift capacity
- ✓ 19' 1" (5.8 m) maximum lift height
- ✓ 3,000 lbs. (1361 kg) lift capacity to 19' 1" (5.8 m)
- ✓ 69 hp (50.1 kW) Yanmar diesel engine



IMPERIAL

CAPACITIES	Max. capacity	5500 lb
	Max. lifting height	19 ft 1 in
	Maximum outreach	11 ft
WEIGHT AND DIMENSIONS	Length to face of forks	12 ft 4 in
	Overall width	5 ft 11 in
	Overall height	6 ft 4 in
	Wheelbase	7 ft 6 in
	Ground clearance	10 in
	Overall cab width	28 in
	Tilt-up angle	12 °
	Tilt-down angle	100 °
	External turning radius	11 ft
	Unladen weight (with forks)	9760 lb
Overall weight	10000 lb	
Standard tires	12 x 16.5	
PERFORMANCES	Lifting	8 s
	Lowering	5 s
	Extension	7 s
	Retraction	6 s
ENGINE	Engine brand	Yanmar
	Engine nom	Tier 4 final
	Engine model	4TNV98C
	Engine power (Hp/kW)	69 Hp / 50.10 kW
Max. torque / Engine rotation	173 ft/lbs @ 1625 rpm	
TRANSMISSION	Transmission type	Hydrostatic
	Number of gears (forward / reverse)	2 / 2
	Max. travel speed	15 mph
	Parking brake	Hydraulic spring release SAHR
	Service brake	Wet disc brakes
	Axle Manufacturer	Dana
HYDRAULICS	Hydraulic pump type	Gear pump
	Hydraulic flow / Pressure	22 US gpm-3350 PSI
TANK CAPACITIES	Engine oil	2 US gal
	Hydraulic oil	18 US gal
	Fuel	17 US gal
MISCELLANEOUS	Steering wheels (front / rear)	2 / 2
	Drive wheels (front / rear)	2 / 2
	Cab certification	ROPS/FOPS
	Controls	Single Joystick FNR

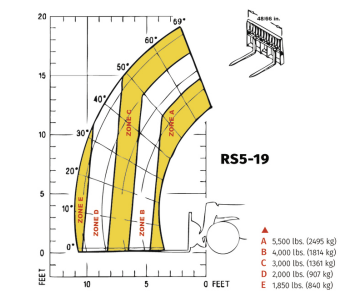
STANDARD FEATURES

- 12 Volt Battery
- 12Volt Power Port
- Back-Up Alarm
- Boom Tip Lift Hook
- Four Wheel Drive
- Multi-Function Display Screen
- Self-Leveling Forks
- Engine Block Heater
- Two-Speed Hydrostatic Drive System

OPTIONAL FEATURES

- Enclosed Cab with Heat and A/C
- Foam Filled Tires
- Light Package - LED
- Solid Rubber Tires
- Suspension Seat
- Turf Tires
- Easy Manager

GEHL Company reminds users to read and understand the operator's manual before operating any equipment. Also, make sure all safety devices and shields are in place and functioning properly. GEHL reserves the right to add improvements or make changes in specifications at any time without notice or obligation.



One Gehl Way, West Bend, WI 53095
Phone: (262) 334-9461



GEHL COMPACT EQUIPMENT