

TH9-50 - NEW

CONSTRUCTION TELEHANDLERS



KEY FEATURES

- ✓ SUPERVIEW cab design for increased line of sight to forks and load
- ✓ Simple F-N-R joystick mounted to the seat for ease of use and operator comfort
- ✓ Designed for quick, efficient transport for masonry materials with the maximum capacity to move mobile scaffold platforms
- ✓ digital display with 50 operator aid messages to assist in correct operation
- ✓ Auxiliary hydraulics
- ✓ high visibility orange seat belt to verify operator use
- ✓ stability system for machine re-position within restricted range

KEY SPECIFICATIONS

- ✓ 9,000 lbs. (4082 kg) maximum lifting capacity
- ✓ 50' 2" (15.3 m) maximum lifting height
- ✓ Lands 6,000 lbs. (2721 kg) at 47' (14.3 m) height
- ✓ 127 hp (95 kW) Deutz diesel engine

IMPERIAL

		IMPERIAL
CAPACITIES	Max. capacity	9000 lb
	Max. lifting height	50 ft 2 in
	Maximum outreach	36 ft 7 in
WEIGHT AND DIMENSIONS	Overall length to carriage	21 ft
	Overall length (with forks)	25 ft
	Overall width	8 ft 4 in
	Overall height	8 ft 6 in
	Wheelbase	11 ft 6 in
	Ground clearance	1 ft 7 in
	Overall cab width	3 ft 1 in
	Tilt-up angle	34 °
	Tilt-down angle	96 °
	External turning radius	12 ft 9 in
	Overall weight	28650 lb
	Tires type	Pneumatic
	Forks length / width / section	48 in x 5 in x 2 in
	Frame leveling longitudinal +/-	10 °
PERFORMANCES	Lifting	16 s
	Lowering	11 s
	Extension	18 s
	Retraction	16 s
	Crowd	4 s
	Dump	6 s
ENGINE	Engine brand	Deutz
	Engine nom	Tier 4 final
	Engine model	TCD 3.6 L4
	Number of cylinders / Capacity of cylinders	4 - 220 in ³
	Engine power (Hp/kW)	127 Hp / 95 kW
Max. torque / Engine rotation	288 ft/lbs @ 2300 rpm	
TRANSMISSION	Transmission type	Powershift
	Number of gears (forward / reverse)	5 / 3
	Max. travel speed	20 mph
	Parking brake	Hydraulic spring release SAHR
	Service brake	Wet disc brakes
HYDRAULICS	Hydraulic pump type	Axial piston
	Hydraulic flow / Pressure	40 US gpm-4000 PSI
TANK CAPACITIES	Engine oil	2 US gal
	Hydraulic oil	42 US gal
	Diesel Exhaust fluid (AdBlue® type)	4 US gal
	Fuel	38 US gal
NOISE AND VIBRATION	Noise at driving position (LpA)	80 dB
MISCELLANEOUS	Steering wheels (front / rear)	2 / 2
	Drive wheels (front / rear)	2 / 2
	Controls	Joystick

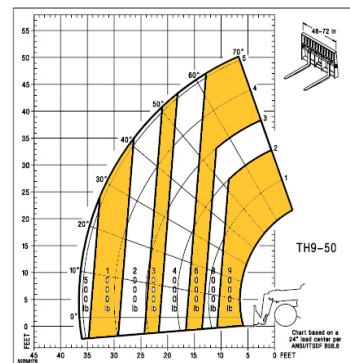


STANDARD FEATURES

- 12 Volt Battery
- 12Volt Power Port
- Back-Up Alarm
- Boom Tip Lift Hook
- Four Wheel Drive
- Multi-Function Display Screen
- Rear Axle Stabilization
- Self-Leveling Forks
- Crab mode
- Wet disc brakes
- Engine Block Heater
- Easy Manager

OPTIONAL FEATURES

- A/C Cabin
- Cabin with Heat
- Suspension Seat
- Work Lights - Front and Rear



GEHL Company reminds users to read and understand the operator's manual before operating any equipment. Also, make sure all safety devices and shields are in place and functioning properly. GEHL reserves the right to add improvements or make changes in specifications at any time without notice or obligation.



One Gehl Way, West Bend, WI 53095
Phone: (262) 334-9461



GEHL COMPACT EQUIPMENT